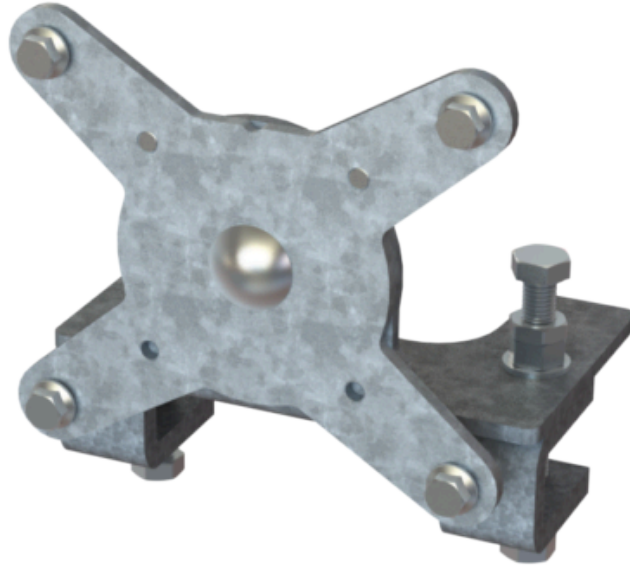


## Joint closure mount, tiltable

**Part no.**

11214121

Joint closure mount, tiltable

- Can be installed on horizontal, vertical and angled beams of “L-type”.
- The T240 can be mounted on and removed from the Tiltable mount without removing any screws.
- Easy installation without loose parts.

**Mounting:**

Lattice towers , on horizontal, vertical and angled beams

**Dimensions:**

Height: X mm

Width: x mm

Depth: x mm

**Material:**

Hot-dip galvanized steel