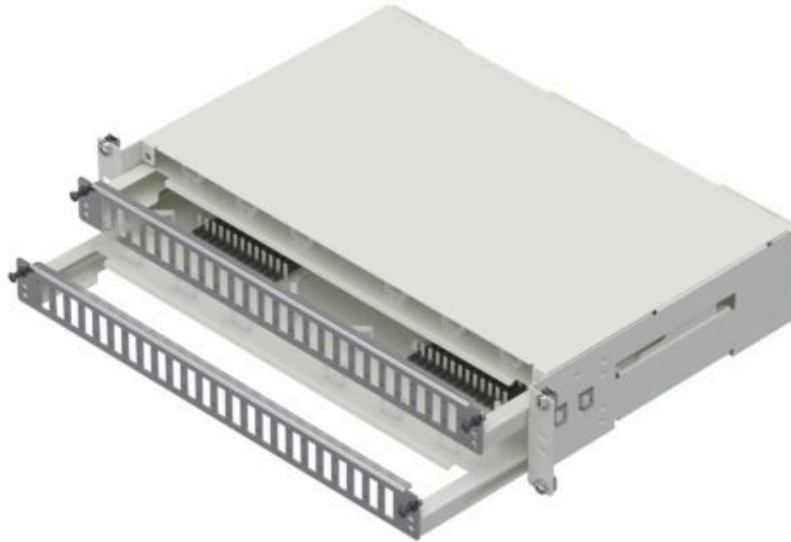




ODFlex 2U



Part no.

11400620-11400625

ODFlex 19" 2U is delivered with a pull-out front drawer and a removable lid, simplifying fiber installation and connector cleaning. The box is available with a front panel for SCD, SCE, and LCQ connector types, and the front panel is clearly numbered with arrows for easier connector orientation.

It is delivered with combs for fiber protection sleeves and pre-mounted fiber holders for fiber loops or prepared for cassette solution use. Cable connection and strain relief can be made from the right or left at the rear of the ODF.

Attachment points for fan-out and splitter sleeves are located at the rear of the pull-out fiber tray.

The fiber tray is equipped with a mechanical stop outward but can also be easily lifted out of the base box upwards.

Capacity: Up to 192 fibers

Mounting:

Cabinet or rack mounting, 19" brackets integrated into the product.

Dimensions

Height unit: 2U

Width unit: 19"

Depth: 311.5 mm with protective cover.



Material:

Powder-coated steel plate, contact area in stainless steel.

Color code: RAL 9010 gloss.

*Multicassette not included**

Konfigurering

Artikelnummer	Utförande	E-nummer	vikt
11400620	ODF 2U SCD 1-96	5055329	6,2
11400621	ODF 2U LCQ 1-192	5055330	6,2
11400622	ODF 2U 1 cass SCD 1-96	5055331	6,2
11400623	ODF 2U 1 cass LCQ 1-192	5055332	6,2
11400624	ODF 2U 2 cass SCD 1-96	5055333	6,2
11400625	ODF 2U 2 cass LCQ 1-192	5055334	6,2

Tillbehör och verktyg

Product	Part no.
Multicassette fibre organizer 36f/72f, 2-pcs	11 202 202
Multicassette fibre organizer 48f, 2-pcs	11 202 204
Multicassette tool	11 216 040
Tool to remove SCD adapter	11 216 045
Blanking plug SC simplex	11 348 010
Blanking plug SC duplex	11 348 020
Cablemodule 19" 1U	11 419 295
Cableguide 19" 1U	11 419 297

Mellanstycken och fiberkablage

Product	Part no.
Blanking plug SC simplex	11 348 010
Blanking plug SC duplex	11 348 020
Adapter LC/APC Quad -E	11 348 887
Adapter SC/APC Duplex -E	11 348 894
Adapter SC/UPC Duplex -E	11 348 895
Adapter LC/UPC Duplex -E	11 348 896
Adapter LC/UPC Quad -E	11 348 898
Adapter SC/UPC Simplex -E	11 348 899
SM SC/APC-SC/APC 2,0mm 2m -E	11 349 761
SM SC/APC-SC/APC 2,0mm 4m -E	11 349 762
SM SC/UPC-SC/UPC 2,0mm 2m -E	11 349 763
SM SC/UPC-SC/UPC 2,0mm 4m -E	11 349 764
SM LC/UPC-LC/UPC 2,0mm 2m -E	11 349 765
SM LC/UPC-LC/UPC 2,0mm 4m -E	11 349 766
SM SC/APC 0,9 L=2m -E	11 349 767
SM LC/UPC 0,9 L=2m -E	11 349 768
Pigtail LC APC 2m 0,9mm -E	11 349 805
Pigtail SC/UPC SM, 0.9mm 2m -E	11 349 808
